



# Title 1 Parent Information Night

North Olmsted City Schools

# What is Title 1?

- Federally funded program
- Purpose is to ensure that all children have a fair, equal and significant opportunity to obtain high quality instruction
- Provides funds to schools to help support instructional programming





# Schoolwide vs. Targeted Assistance Buildings

Targeted Assistance Programs	BOTH	Schoolwide Programs
<ul style="list-style-type: none"><li>• Students identified as most at-risk are eligible for services</li><li>• School's economically disadvantaged rate is below 40%</li></ul>	<ul style="list-style-type: none"><li>• Programs &amp; strategies used are evidence based</li><li>• Supplemental services provided IN ADDITION to regular academic programming</li><li>• Progress monitored bi-weekly to evaluate effectiveness</li></ul>	<ul style="list-style-type: none"><li>• All student eligible to receive services</li><li>• School's economically disadvantaged rate is 40% or above</li></ul>

# North Olmsted Title 1 Served Buildings

## SCHOOLWIDE Buildings

- Birch Primary School
- Forest Primary School
- Maple Intermediate School
- Pine Intermediate School

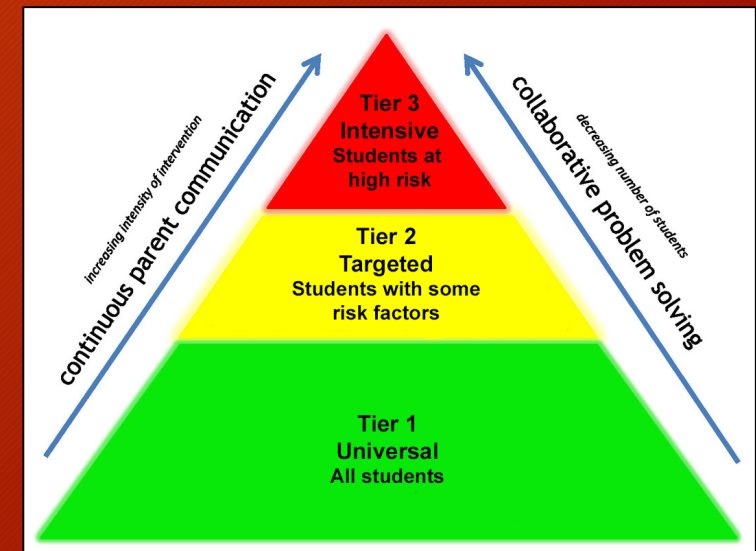
## TARGETED ASSISTANCE Building

- Chestnut Intermediate School



# How do Students receive Title 1 Support?

- Students are identified as at-risk or in need of supplemental reading services
- All students are screened in the fall using a variety of assessments
- Assessment data and teacher feedback/observations used to identify for additional support



# What does Title 1 (Tier 2) Support Look Like?

- 30 minute Instructional Block
- Supplemental service provided in **addition** to Tier 1 Core Reading instruction
- Can be *pull-out* or *push-in* support
- Designed to help reinforce skills taught in Tier 1

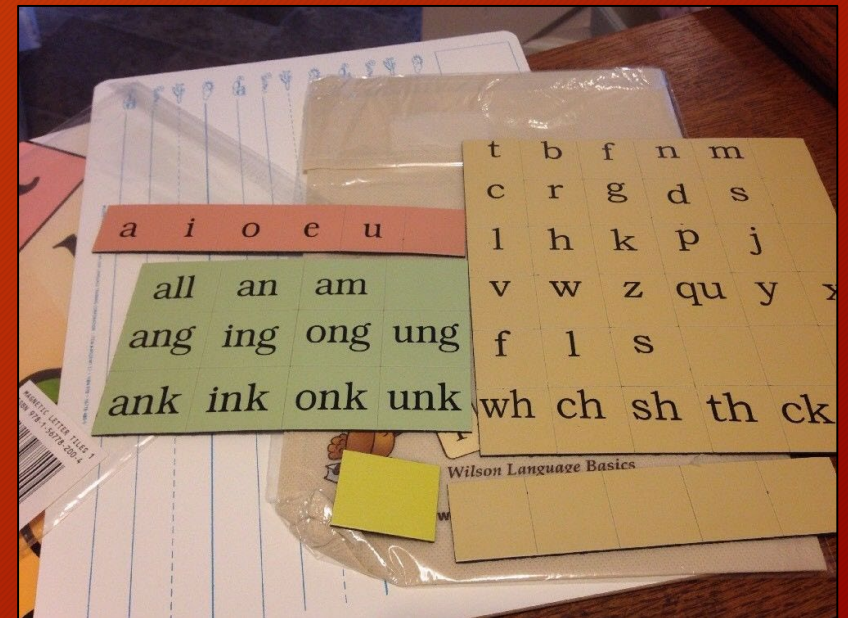
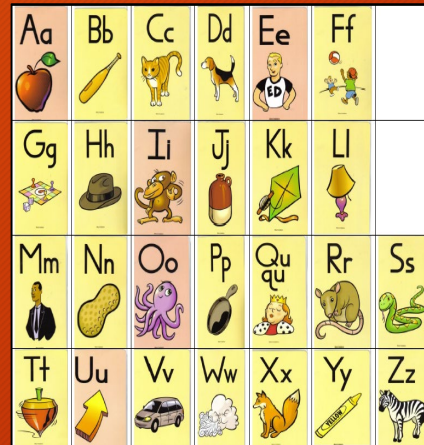




# Fundations



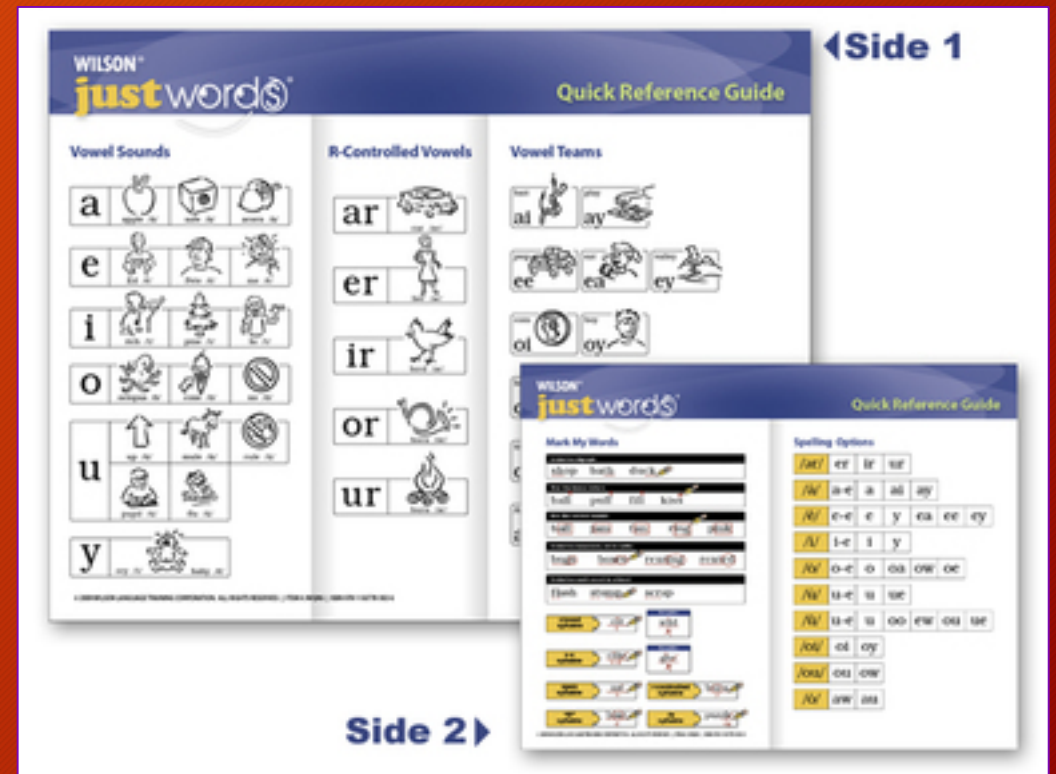
- A multi-sensory, structured language program that explicitly and systematically teaches reading foundational skills emphasizing:
  - Phonemic Awareness
  - Phonics/Word study
  - High frequency word study
  - Vocabulary
  - Handwriting
  - Spelling
  - Fluency



# Just Words



- A highly explicit, multi-sensory decoding and spelling program that emphasizes:
  - Word Structure
  - Decoding/Encoding automaticity
  - High frequency words practice
  - Fluency
  - Vocabulary
  - Comprehension strategies

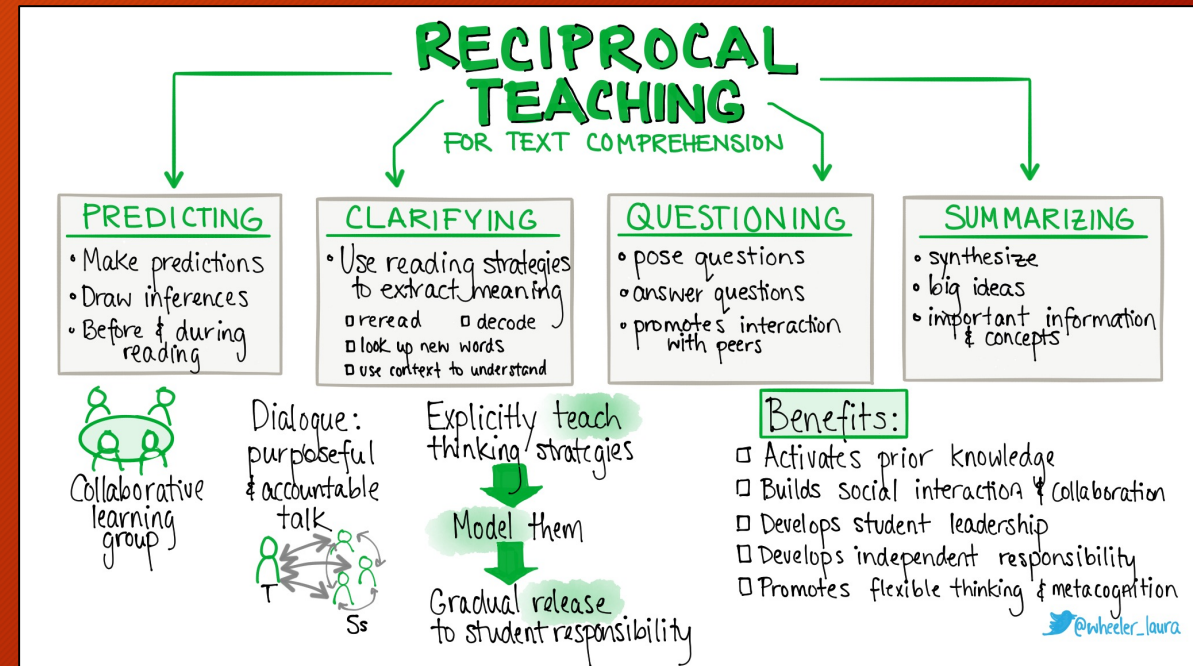




# Soar to Success



- Intensive Reading Intervention program that uses the RECIPROCAL TEACHING method to accelerate reading growth through:
  - Balancing use of fiction and non-fiction text
  - Developing consistent routines
  - Collaborative & interactive approach
  - Use of powerful graphic organizers
  - Purposeful dialogue about text



# How do I know if my child is making progress?

- At the end of each quarter, your child will receive an Intervention Progress Report
- Unit/Benchmark Assessments within programs
- Parent-teacher conferences
- Questions? Please contact your child's Title 1 tutor directly



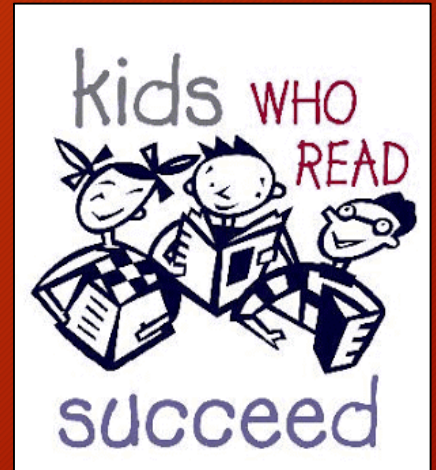


# How does my child exit Title 1 Services?

- Most students are progress monitored on a bi-weekly basis
- Data is reviewed in 6-8 week cycles to determine students who meet targets and no longer require extra support services
- Your child's title 1 tutor will notify you of this change in writing




# How can I best support Reading at Home?

- Read to and with your child at home
- Let them see you reading at home
- Ask them questions about books at home
- Watch out for the Parent Letters introducing Skills that can be reinforced at home
- Talk about school & what they are learning at home





# WHY READ 20 MINUTES AT HOME?

Student A Reads	Student B Reads	Student C Reads
❖ 20 minutes per day.	❖ 5 minutes per day.	❖ 1 minute per day
❖ 3,600 minutes per school year.	❖ 900 minutes per school year.	❖ 180 minutes per school year.
❖ 1,800,000 words per year.	❖ 282,000 words per year.	❖ 8,000 words per year.
		
❖ Scores in the 90 <sup>th</sup> percentile on standardized tests.	❖ Scores in the 50 <sup>th</sup> percentile on standardized tests.	❖ Scores in the 10 <sup>th</sup> percentile on standardized tests.

If they start reading for 20 minutes per night in Kindergarten, by the end of 6<sup>th</sup> grade, Student A will have read for the equivalent of 60 school days, Student B will have read for 12 school days, and Student C will have read for 3.

(Nagy and Herman, 1987.)

## WANT TO BE A BETTER READER? SIMPLY READ.